



# Office of General Services

DESIGN & CONSTRUCTION GROUP  
THE GOVERNOR NELSON A. ROCKEFELLER  
EMPIRE STATE PLAZA  
ALBANY, NY 12242

---

## ADDENDUM NO. 5 TO PROJECT NO. Q1963

### CONSTRUCTION, ELEVATOR, HVAC, PLUMBING AND ELECTRICAL WORK PROVIDE RENOVATIONS & ELECTRICAL UPGRADES, MAIN ELEVATOR MACHINE ROOM UPSTATE MEDICAL CENTER 750 E ADAMS ST SYRACUSE, NY

November 7, 2025

**NOTE:** This Addendum forms a part of the Contract Documents. Insert it in the Project Manual. Acknowledge receipt of this Addendum in the space provided on the Bid Form.

#### ELEVATOR WORK SPECIFICATIONS

1. SECTION 142816 ELEVATOR CONTROLLER AND OPERATION: Discard Section 142816 in its entirety.
2. SECTION 142871 ELEVATOR EMERGENCY OPERATION AND EMERGENCY SIGNAL DEVICES: Discard Section 142871 in its entirety.

#### GENERAL DRAWINGS

3. Drawing No. G-103:
  - a. Remove Phasing Note P201.

#### CONSTRUCTION WORK DRAWINGS

4. Revised Drawing:
  - a. Drawing No. S-401, noted "REVISED DRAWING 1/5/2025" accompanies this Addendum and supersedes the same numbered originally issued drawing.

#### ELEVATOR WORK DRAWINGS

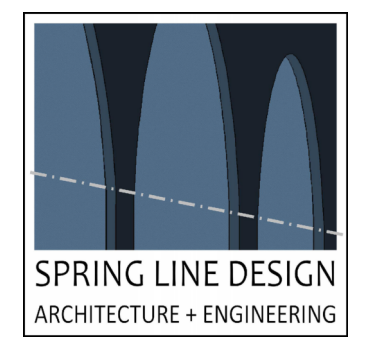
5. Drawing No. U-402:
  - a. GENERAL NOTES, Change Note 518 to Read:  
"METAL FRAMING SYSTEM AND DISCONNECTING MEANS FOR EXISTING ELEVATORS – COORDINATE POWER CONNECTIONS TO EXISTING ELEVATOR CONTROLLERS – REFER TO E-SERIES DRAWINGS"
  - b. GENERAL NOTES, Remove Note 557
  - c. GENERAL NOTES, Remove Note 594

#### END OF ADDENDUM

Brady M. Sherlock, P.E.  
Director, Division of Design  
Design & Construction



ME ENGINEERING



Watts Architects & Engineers

WARNING:  
THE ALTERATION OF THIS MATERIAL IN ANY WAY, UNLESS DONE UNDER THE DIRECTION OF A COMPARABLE PROFESSIONAL, I.E. ARCHITECT FOR AN ARCHITECT, ENGINEER FOR AN ENGINEER OR LANDSCAPE ARCHITECT FOR A LANDSCAPE ARCHITECT, IS A VIOLATION OF THE NEW YORK STATE EDUCATION LAW AND/OR REGULATIONS AND IS A CLASS 'A' MISDEMEANOR.



CONTRACT: CONSTRUCTION

TITLE: PROVIDE RENOVATIONS & ELECTRICAL UPGRADES, MAIN ELEVATOR MACHINE ROOM

LOCATION: UPSTATE MEDICAL CENTER  
750 E ADAMS ST. SYRACUSE, NY

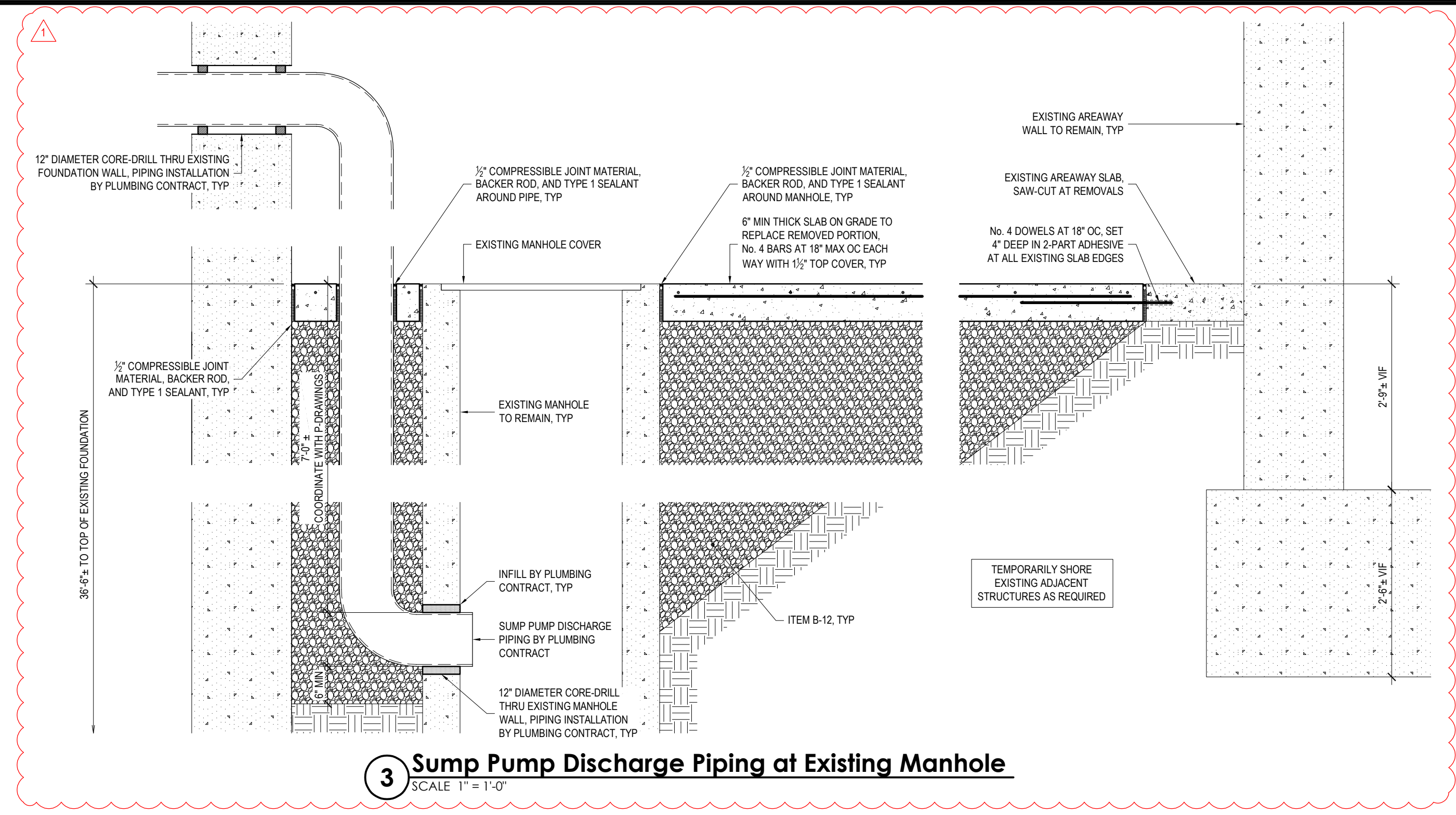
CLIENT: SUNY UPSTATE MEDICAL UNIVERSITY

MARK	DATE	DESCRIPTION
1	11/5/2025	REVISED DOCUMENTS
	7/24/2025	BID DOCUMENTS

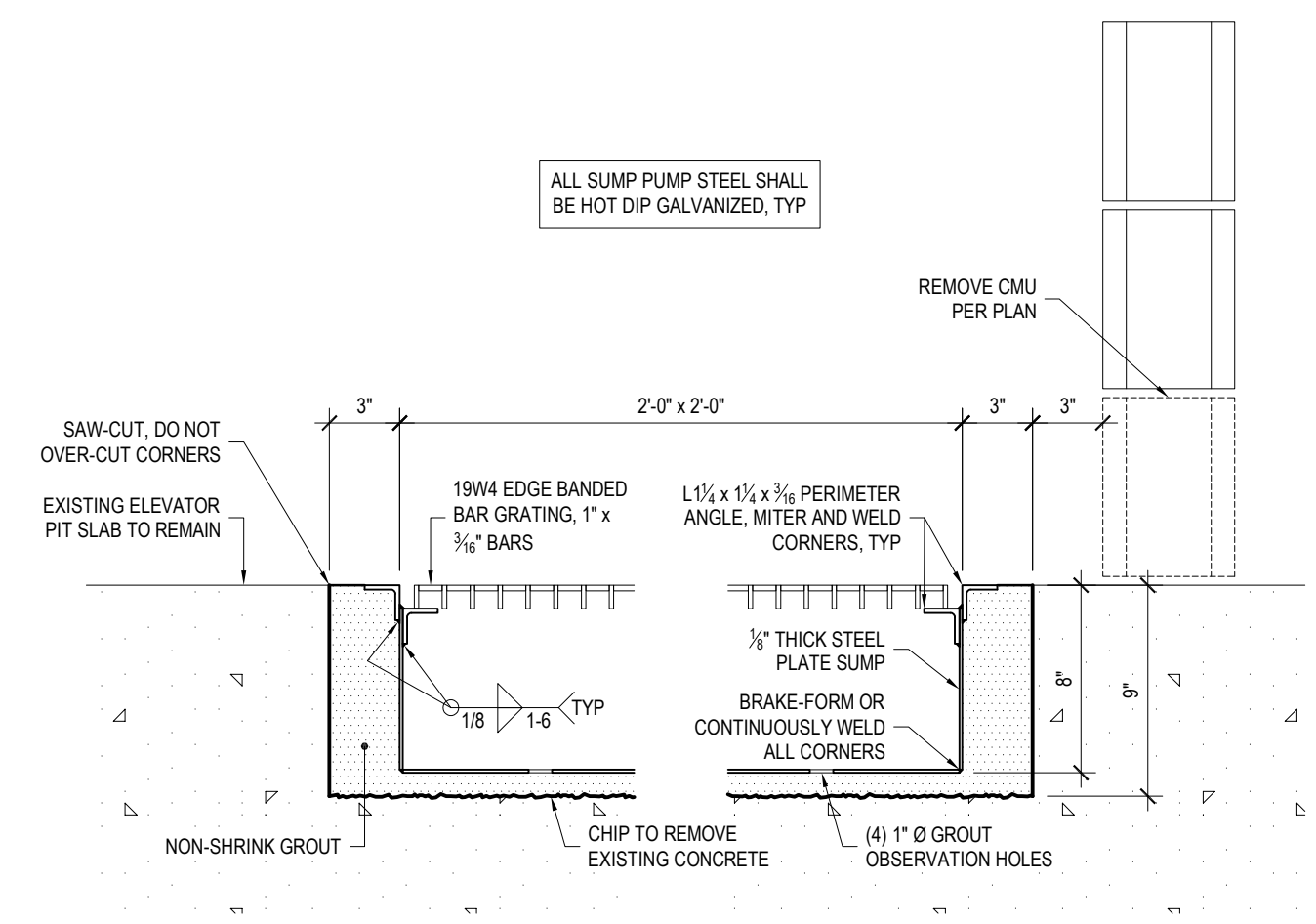
PROJECT NUMBER: Q1963 - C  
DESIGNED BY: JAB  
DRAWN BY: NAC  
FIELD CHECK:  
APPROVED:

SHEET TITLE: ENLARGED BASEMENT STRUCTURE PLAN AND DETAILS

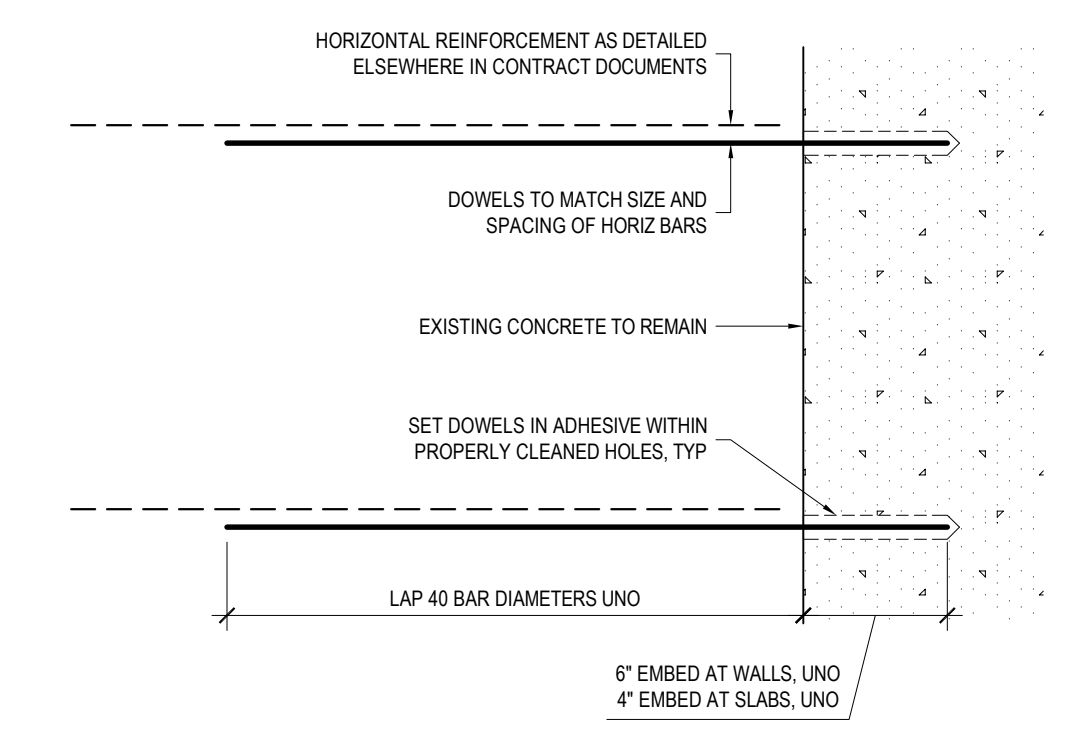
DRAWING NUMBER: S-401



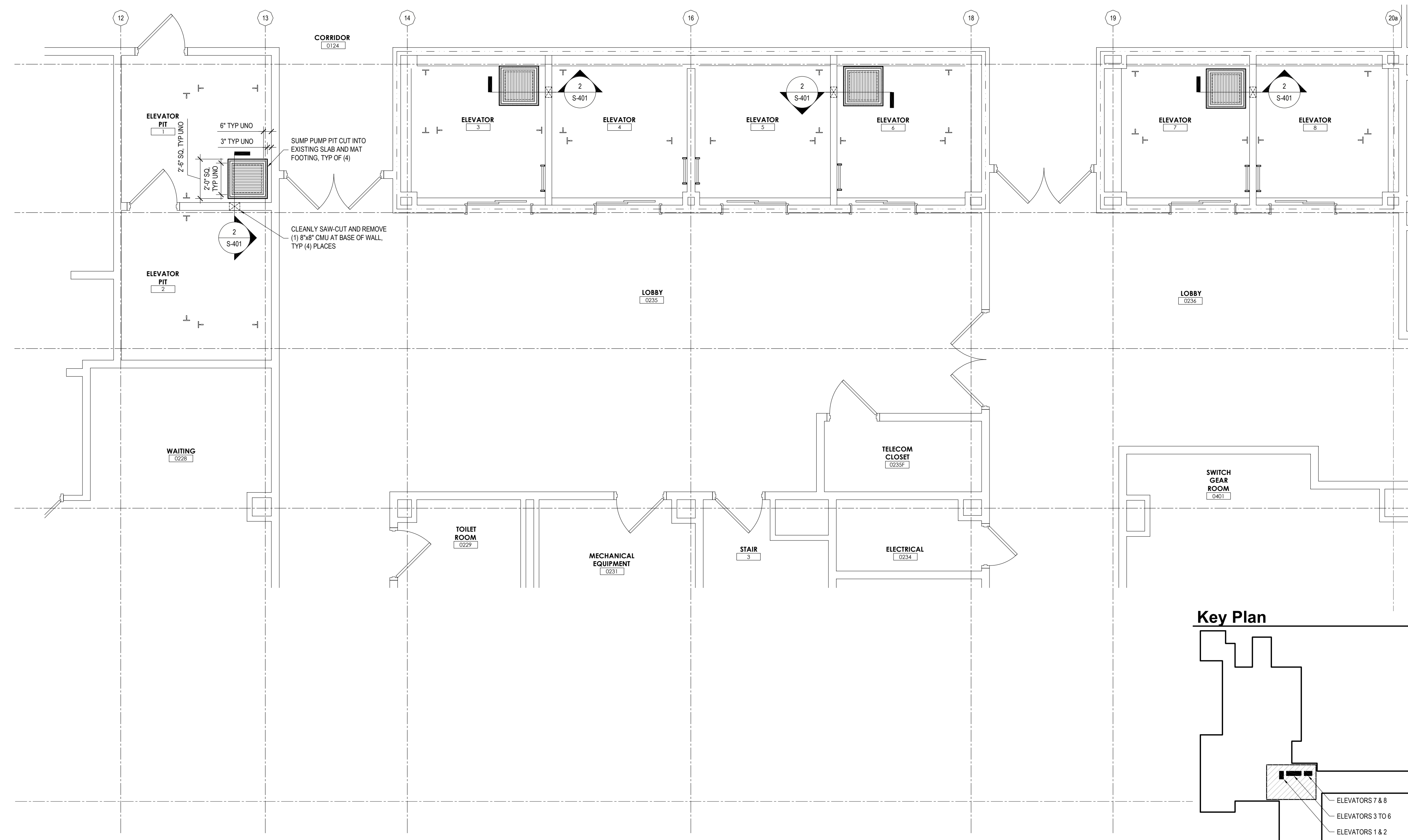
3 Sump Pump Discharge Piping at Existing Manhole  
SCALE 1" = 1'-0"



2 Sump Pump Pit Detail  
SCALE 1-1/2" = 1'-0"



4 Concrete Reinforcement Pinning Detail  
SCALE 1-1/2" = 1'-0"



1 Enlarged Basement Structure Plan  
SCALE 1/4" = 1'-0"

Key Plan

